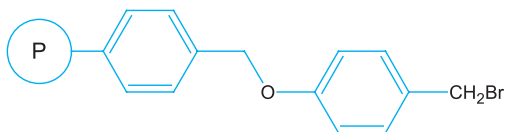


PL-Wang-Br Resin



Description

Bromomethylphenoxymethyl polystyrene

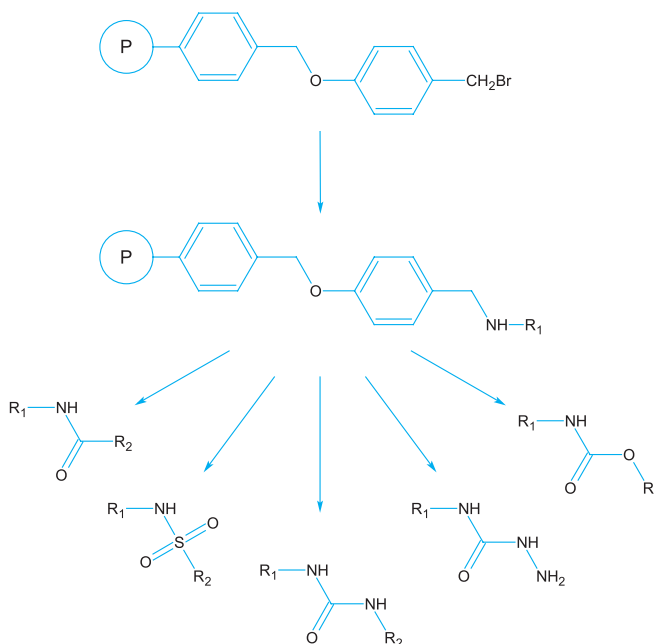
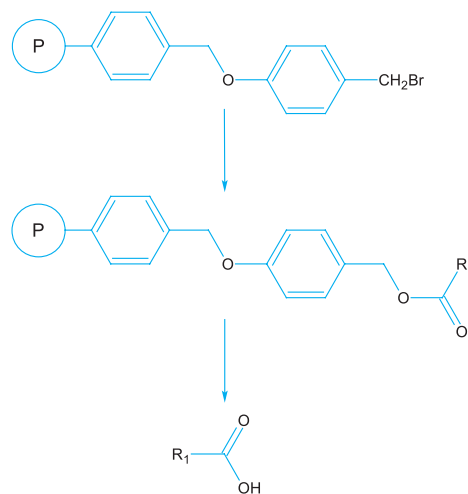
Synonyms

Bromo Wang resin; Alkoxybenzylbromide resin

Applications

Like PL-Wang Resin, PL-Wang-Br Resin is suited to the synthesis of carboxylic acid derivatives, however PL-Wang-Br Resin is a more reactive version, simplifying the resin loading procedure. For example, carboxylic acids are readily immobilized on this support as their cesium salt.

In addition, amines can also be attached to this support. These may be subsequently released as amide or sulfonamide derivatives by reaction with appropriate acids or acid chlorides. Ureas, semicarbazides and carbamates may also be produced in a similar fashion.



References

- Mergler, M et al (1989), *Tetrahedron Lett*, **30**, 6741
- Corbett, J W et al (1997), *Bioorg Med Chem Lett*, **7**, 1371
- Ngu, K & Patel, D V (1997), *Tetrahedron Lett*, **38**, 937
- Micheli, F et al (2001), *J Comb Chem*, **3**, 224
- Boldi, A M et al (2001), *J Comb Chem*, **3**, 367
- Phoon, C W & Sim, M M (2001), *Synlett*, **5**, 697

Products Information

Microporous

PL-Wang-Br Resin

1.3mmol/g 150-300 μ m (50-100 mesh)