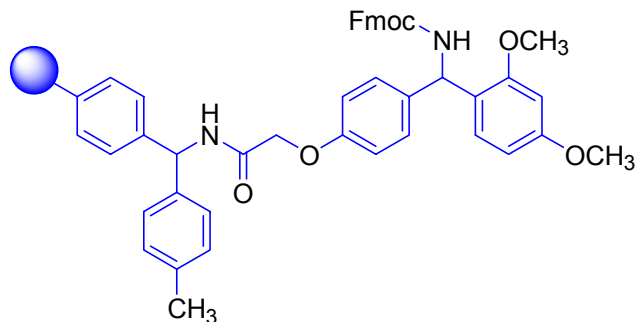


PL-Rink MBHA Resin



Description

Fmoc Rink Amide MBHA resin

Synonyms

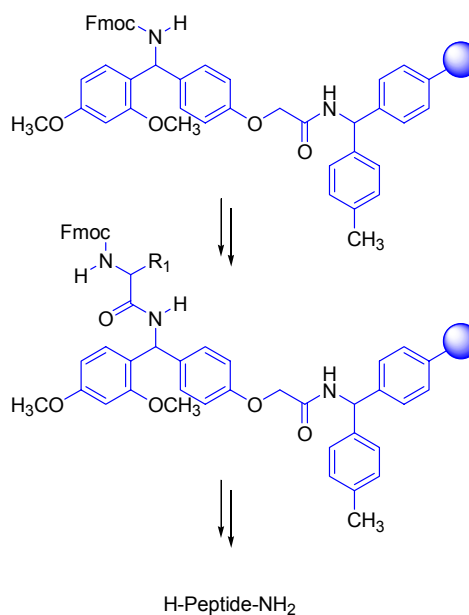
Knorr Resin

Applications

PL-Rink MBHA Resin is widely used for the solid phase synthesis of peptide amides using Fmoc chemistry. It is designed to allow the attachment of carboxylic acids, which are subsequently cleaved as amides. Numerous examples of the synthesis of peptide amides are available in the literature.

Prior to use, the Fmoc protecting group must be removed from the resin, which can be accomplished using standard deprotection protocols (eg 20% piperidine in DMF). The resulting primary amine provides the attachment point for α -Fmoc protected amino acids which can be coupled on to the resin using standard coupling conditions.

As with PL-Rink Resin (Fmoc Rink Amide AMS), the handle is attached to the resin through an amide linkage. This reduces the risk of the handle being simultaneously cleaved under the final 95% TFA cleavage conditions.



References

Bernatowicz, M S et al (1989), Tetrahedron Lett, **30**, 4645

Products Information

Microporous

PL-Rink MBHA Resin

0.7mmol/g 75-150 μ m (100-200 mesh)

PL-Rink MBHA Resin is sold under license from Aventis.