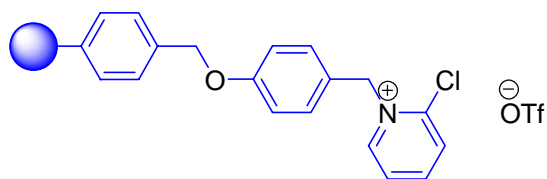


# PL-Mukaiyama Resin



## Description

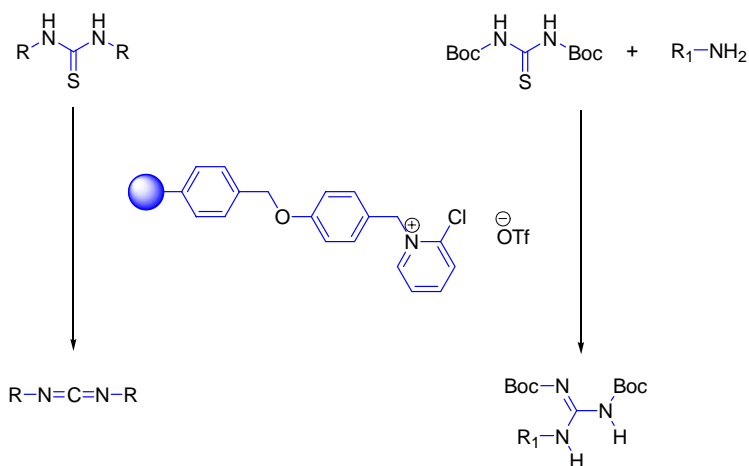
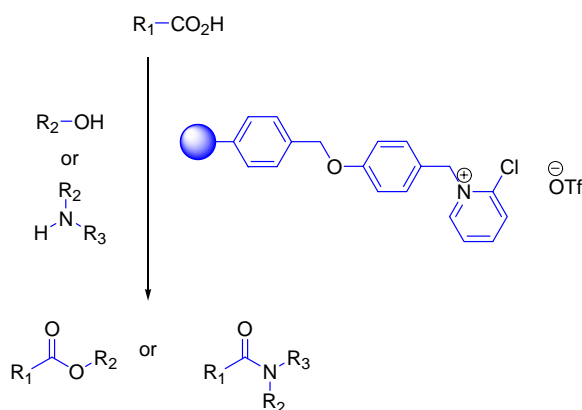
Polymer supported Mukaiyama reagent

## Synonyms

Polymer bound N-methyl-2-chloropyridinium triflate

## Applications

The solution phase variant of polymer supported Mukaiyama reagent (N-methyl-2-chloropyridinium iodide) has been used for several years to aid the formation of amides, esters, guanidines and carbodimides through dehydration. Unfortunately the reagent itself is not particularly soluble in common organic solvents and the by-products can prove problematical to remove. Very recently two groups have independently published polymer supported variants. The advantage is immediately apparent as any excess reagent or by-products remain attached to the resin and can be readily removed by filtration.



## References

Croignani, S et al (2004), *Org Lett*, **6**, 4579  
Convers, E et al (2004), *Tetrahedron Lett*, **45**, 3401

## Products Information

Microporous  
**PL-Mukaiyama Resin**  
1.0mmol/g 150-300 $\mu$ m (50-100 mesh)