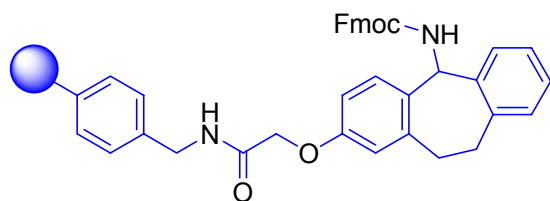


PL-Ramage Resin



Description

Fmoc Amino Ramage AMS Resin

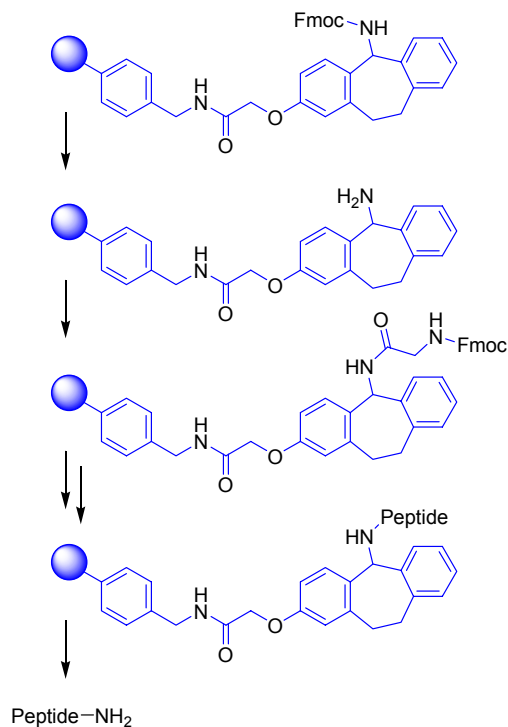
Synonyms

Tricyclic amide linker resin

Applications

Ramage resin is particularly acid sensitive and is therefore suitable for the preparation of fully protected peptide amides via Fmoc chemistry.

Peptide cleavage can be accomplished by treatment with just 2-3% TFA. The resultant fully protected peptide amide can then be purified before use in a solution phase fragment condensation reaction, or it can be treated with a higher concentration of acid in order to remove any side chain protecting groups whilst in solution.



References

Ramage, R et al. (1993), *Tetrahedron Lett*, **34**, 6599
Loughnan, M et al. (1998), *J Biol Chem*, **273**, 15667

Products Information

Microporous

PL-Ramage Resin

0.7mmol/g 75-150µm (100-200 mesh)

See Also

Resins for Peptide Synthesis: PL-Rink Resin

Resins for Peptide Synthesis: PL-Sieber Resin