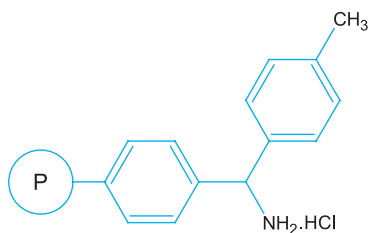


# PL-MBHA Resin (1)



## Description

4-Methylbenzhydrylamine resin (hydrochloride salt)

## Synonyms

None

## Applications

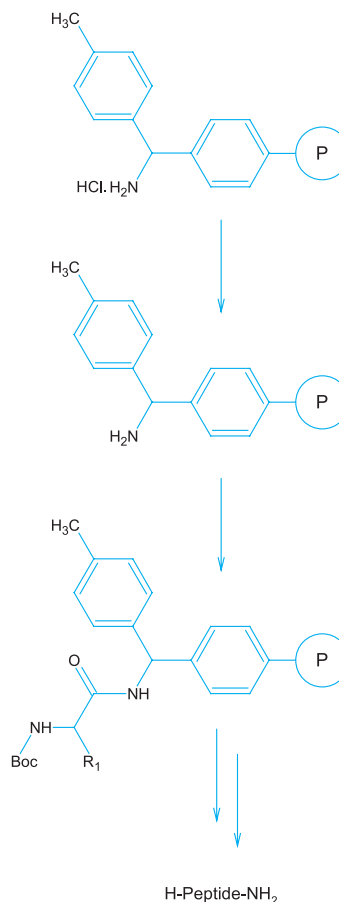
Traditional support for solid phase synthesis of peptide amides using Boc chemistry.

Initial amino acids can be coupled directly to the resin using standard coupling techniques.

Cleavage typically requires treatment with very strong acid such as HF or TFMSA. Note: Specialist equipment is required to safely perform HF cleavage operations.

Sometimes Fmoc peptide synthesis is performed on PL-MBHA Resin to allow for removal of side chain protecting groups while the peptide chain remains attached to the resin. HF cleavage then ensures that only the desired unprotected peptide amide is released into solution, free from contamination with cleaved side chain protecting groups.

PL-MBHA Resin can also be used for attachment of linkers in a similar manner to PL-AMS Resin. Note: PL-MBHA Resin is supplied as its HCl salt and must be neutralized before use.



## References

- Channabasavaiah, K & Stewart, J M (1979), *Biochem Biophys Res Comm*, **86**, 1266  
Matsueda, G R & Stewart, J M (1981), *Peptides*, **2**, 45  
Gaehde, S T et al (1981), *Int J Peptide Protein Res*, **18**, 451  
Adams, J H et al (1998), *J Org Chem*, **63**, 3706  
Thompson, P E et al (1995), *Int J Peptide Protein Res*, **46**, 174

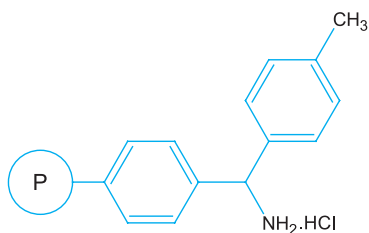
## Products Information

Microporous

### PL-MBHA Resin

1.1mmol/g 75-150 $\mu$ m (100-200 mesh)

# PL-MBHA Resin (2)



## Description

4-Methylbenzhydrylamine resin (hydrochloride salt)

## Synonyms

None

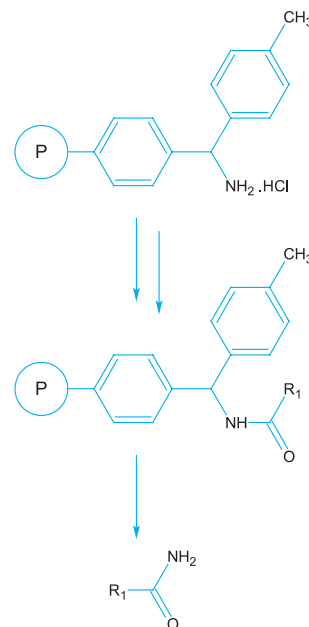
## Applications

Traditional support for solid phase synthesis of amides using strong acid cleavage.

Initial acids can be coupled directly to the resin using standard coupling techniques.

The acid stability of the resin enables other molecules to be produced such as  $\beta$ -lactam derived compounds, where reagents and by-products from the process might otherwise cause premature cleavage from the resin.

PL-MBHA Resin can also be used for attachment of linkers in a similar manner to PL-AMS Resin. Note: PL-MBHA Resin is supplied as the HCl salt and must be neutralized before use.



## References

- Channabasavaiah, K & Stewart, J M (1979), *Biochem Biophys Res Comm*, **86**, 1266  
Matsueda, G R & Stewart, J M (1981), *Peptides*, **2**, 45  
Gaehde, S T et al (1981), *Int J Peptide Protein Res*, **18**, 451  
Pei, Y et al (1997), *Tetrahedron Lett*, **38**, 3349  
Adams, J H et al (1998), *J Org Chem*, **63**, 3706  
Thompson, P E et al (1995), *Int J Peptide Protein Res*, **46**, 174  
Smith, J M & Krchňák, V (1999), *Tetrahedron Lett*, **40**, 7633

## Products Information

Microporous

### PL-MBHA Resin

1.1mmol/g 75-150 $\mu$ m (100-200 mesh)