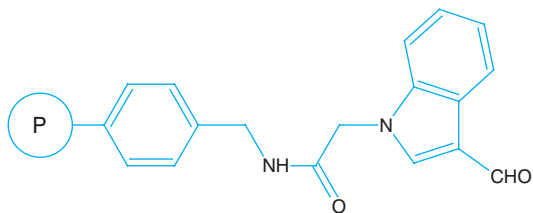


PL-ICHO Resin



Description

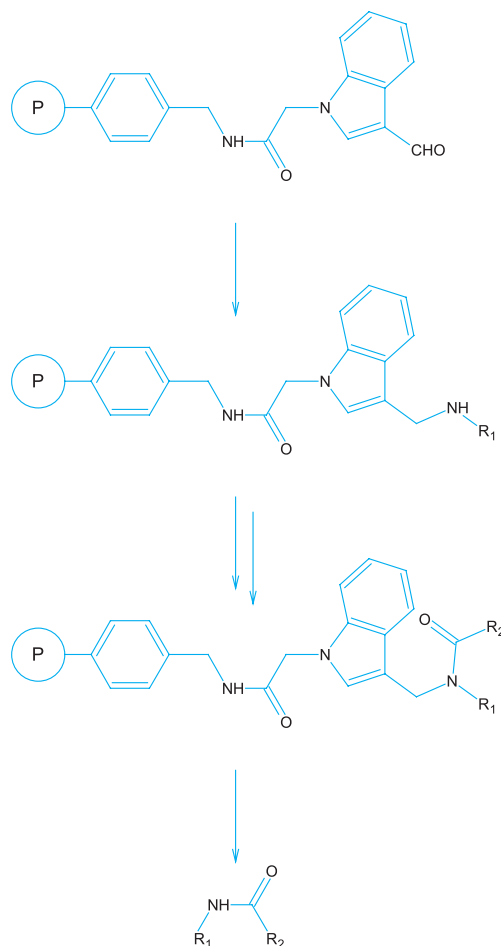
3-Formylindol-1-yl acetic acid AMS resin

Synonyms

None

Applications

PL-ICHO Resin is a particularly versatile formyl functionalized resin. Like other resins of this type, primary amines are immobilized onto the resin via a reductive amination step. Amines attached to the indole linker can be subjected to modification and subsequent acylation prior to cleavage by acidolysis. The cleavage reaction can often be performed under milder conditions (reduced TFA concentrations) than other formyl resins.



References

- Estep, K G et al (1998), *J Org Chem*, **63**, 5300
Bhattacharyya, S et al (2000), *Combi Chem & High Throughput Screening*, **3**, 117
Yan, B et al (2000), *J Comb Chem*, **2**, 66
Dorff, P H & Garigapati, R S (2001), *Tetrahedron Lett*, **42**, 2771

Products Information

Microporous

PL-ICHO Resin

1.4mmol/g 150-300 μ m (50-100 mesh)

See Also

- Resins for Solid Phase Synthesis: Formyl Functionalized Resins PL-FMP Resin
Resins for Solid Phase Synthesis: Formyl Functionalized Resins PL-FDMP Resin
Resins for Solid Phase Synthesis: Formyl Functionalized Resins PL-FMPB Resin