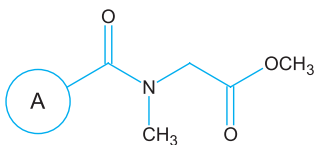


PL-DMA Resin



Description

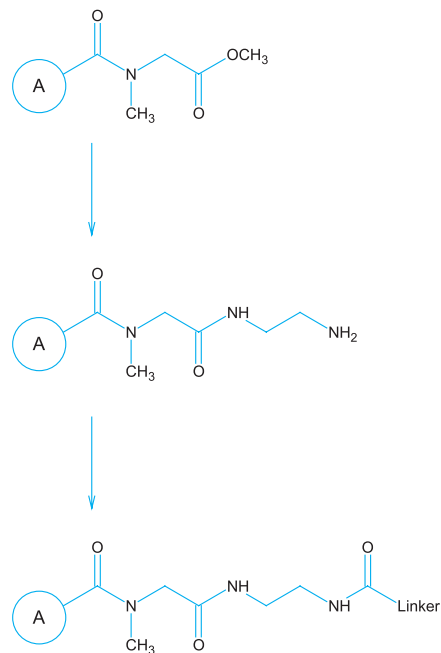
Sarcosine dimethylacrylamide resin

Synonyms

Sheppard's PepSyn resin

Applications

Atherton and Sheppard introduced an acrylamide-based polymer support in order to overcome solvation problems due to the dissimilarity between peptide chains and polystyrene-based materials. Dichloromethane is the preferred solvent for polystyrene based resins, but is a poor solvent for peptides. In contrast, the polyamide backbone of PL-DMA Resin has similar solvation properties to the growing peptide chain, and is well solvated in polar organics such as DMF. PL-DMA Resin should be activated by reaction with ethylenediamine. The resultant primary amine is suitable for attachment of a variety of commonly used linkers, such as 4-hydroxymethylphenoxyacetic acid (HMPA).



References

Atherton, E et al (1975), J Am Chem Soc, **97**, 6585

Arshady, R et al (1979), J Chem Soc, Chem Commun, 423

Arshady, R et al (1981), J Chem Soc, Perkin Trans 1, 529

Atherton, E & Sheppard, R C (1989), "Solid Phase Peptide Synthesis: A Practical Approach", IRL Press, Oxford

Products Information

Microporous

PL-DMA Resin

1.0mmol/g 55-250 μ m (60-270 mesh)